



DWELL

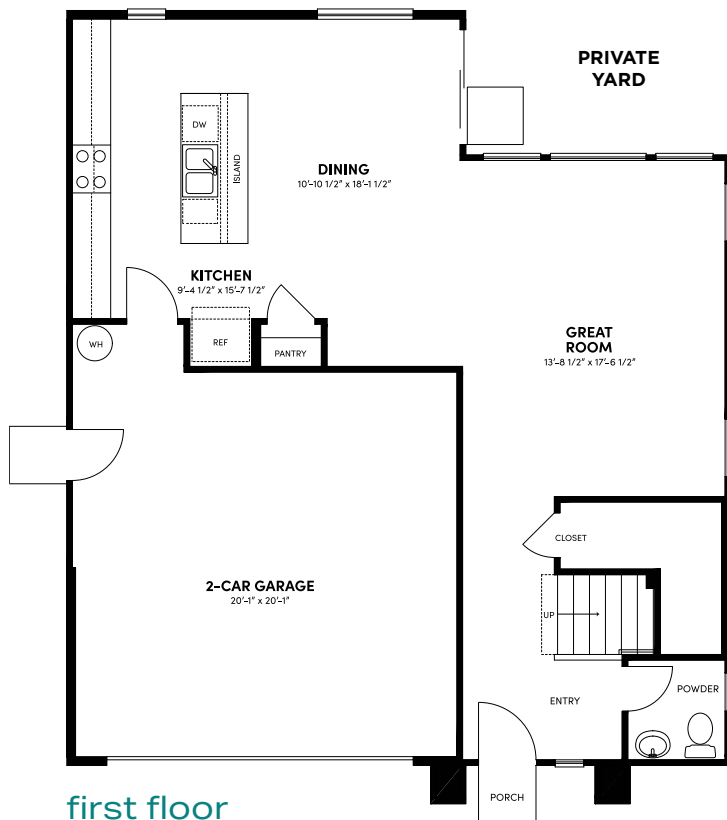
NEW HAVEN

MODERN single-family homes

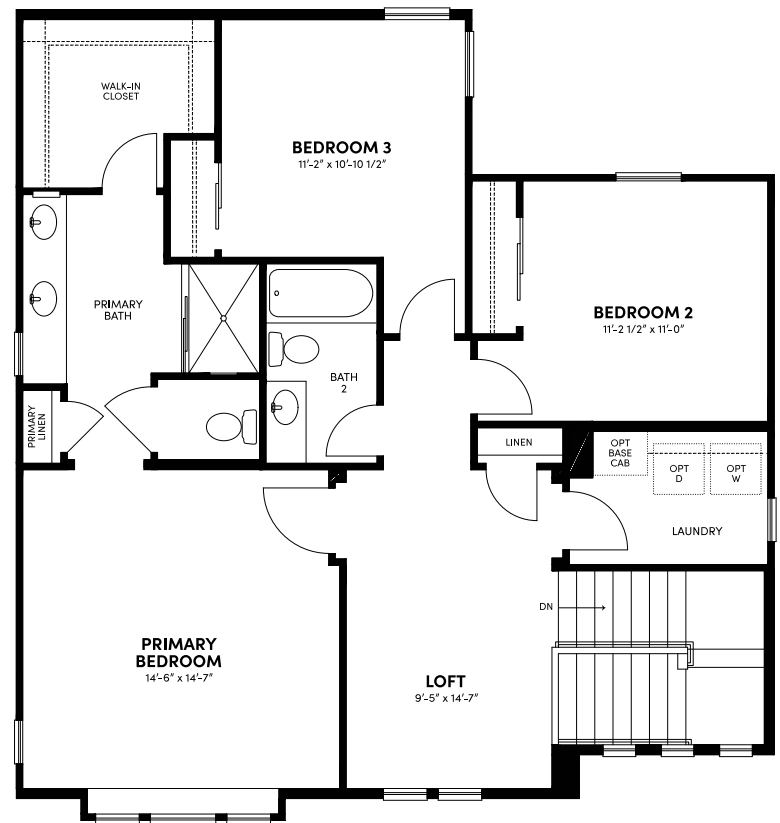
Brookfield
Residential

PLAN 1r

Approx. 1,889 Sq. Ft.
3 Bedrooms + Loft • 2.5 Baths
2-Car Garage • Private Yard



first floor



second floor

As Modeled

PLAN 1 EXTERIOR elevations

A
Spanish



B
Farmhouse

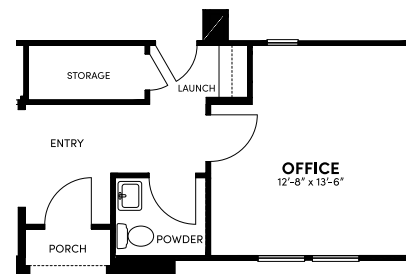
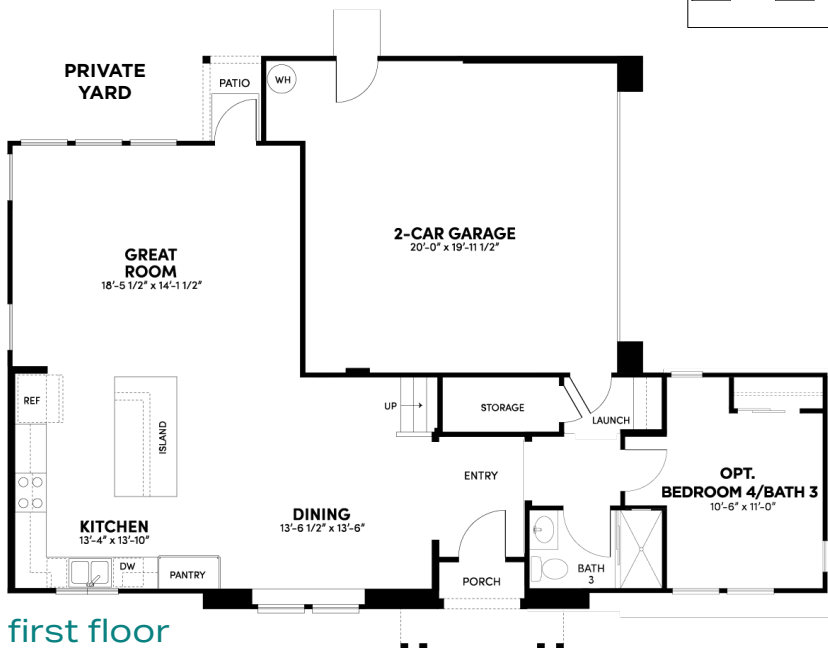
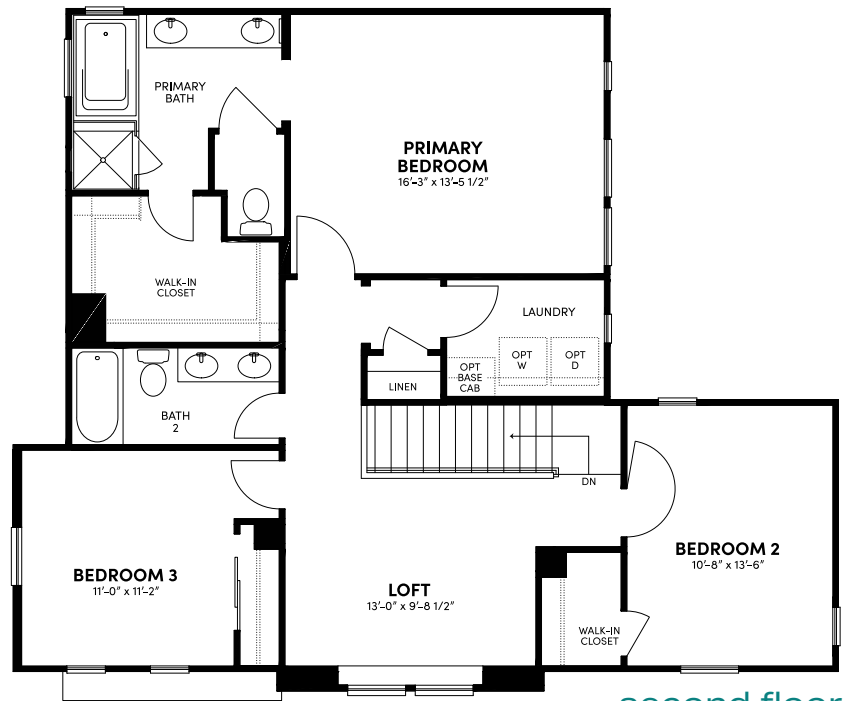


C
Cottage



PLAN 2r

Approx. 2,134 Sq. Ft.
3-4 Bedrooms + Loft • 2.5-3 Baths
2-Car Garage • Office • Private Yard



included office in lieu of
opt. bedroom 4/bath 3

As Modeled

PLAN 2 EXTERIOR elevations

A
Spanish



B
Farmhouse

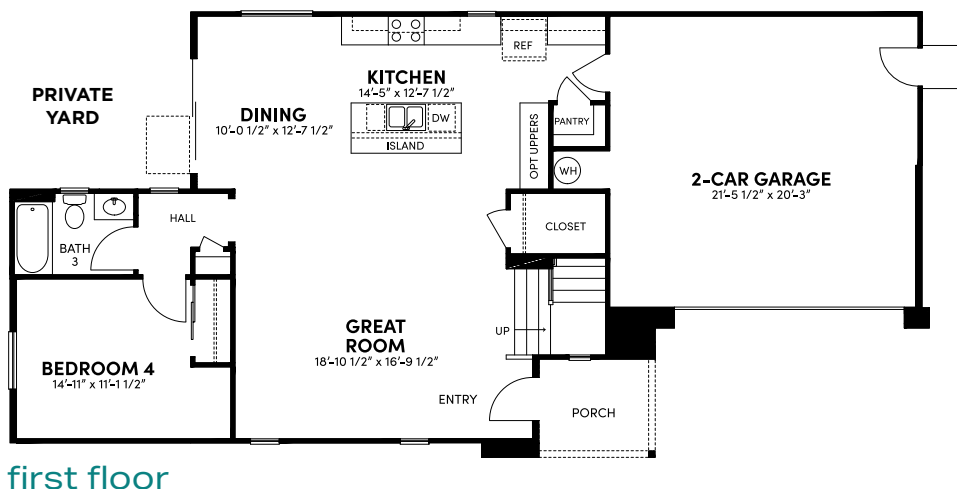
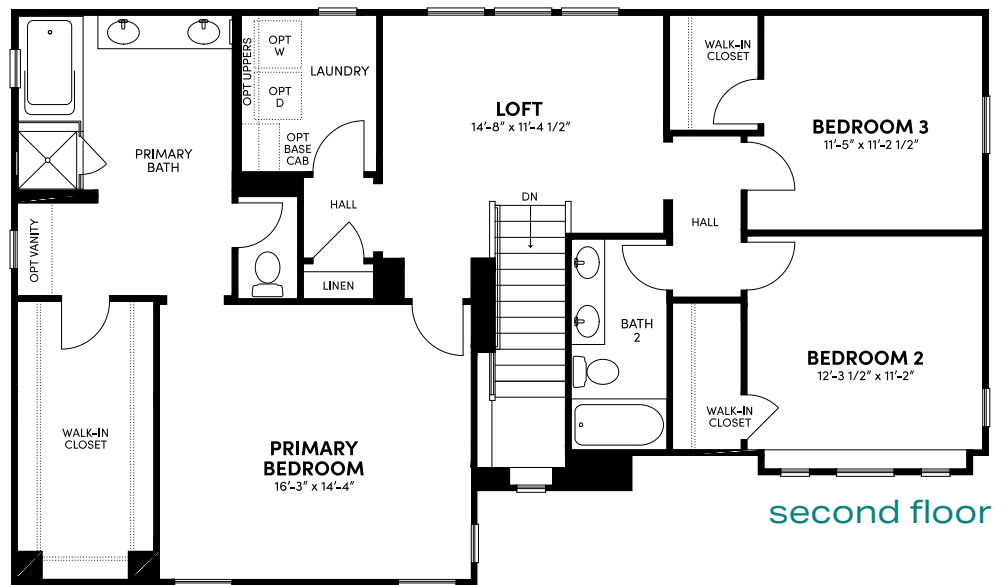


C
Cottage



PLAN 3r

Approx. 2,360 - 2,371 Sq. Ft.
4 Bedrooms + Loft • 3 Baths
2-Car Garage • Private Yard



As Modeled

PLAN 3 EXTERIOR elevations

A
Spanish



B
Farmhouse



C
Cottage



it's all in the **DETAILS**

EXCEPTIONAL EXTERIORS

- A welcoming street scene comprised of beautifully detailed Spanish, Cottage and Farmhouse-inspired architecture situated in cool courtyards
- Architectural details including exterior siding, and board and batten to enhance the look of your new home (varies per elevation)
- Exterior light fixtures and illuminated address signs
- Inviting, low-maintenance 8' entry doors in painted finish with Schlage® matte black hardware
- Aluminum rain gutters at select locations
- Interior access at fully dry-walled two-car garage with stylish sectional roll-up garage door and Wi-Fi enabled opener
- Charming private rear yard space with weather-proofed exterior electrical outlets



STYLISH LIVING SPACES

- Decorative door casings and elevated 2 1/4" baseboards throughout
- Clean-lined square wall corners
- Two-panel interior doors with aged bronze door hardware
- Master bathrooms feature white cultured marble countertops with 4" backsplash, oval undermount sinks with Delta® single post polished chrome faucets, shower with 1/4" framed glass enclosure, soaking tub (per plan), elongated toilet and convenient medicine cabinet for extra storage
- Secondary baths feature white cultured marble countertops with 4" backsplash, oval undermount sinks with Delta® polished chrome center-set faucets, tub/shower with simulated subway tile surround and elongated toilets
- Powder baths feature square pedestal sink with single post polished chrome faucet and elongated toilet (per plan)
- Laundry rooms with gas dryer hook-ups, wire shelving and optional sink and/or optional cabinetry
- Coat closets with extra storage space under stairs
- Convenient linen closets with built-in wire shelving

MODERN KITCHENS

- Stainless steel Whirlpool® energy-efficient appliance package includes 30" gas range with 4 burners and single oven, 30" built-in microwave/hood above range and 24" ENERGY STAR® multi-cycle dishwasher
- European-style white thermofoil cabinetry with raised panel doors, adjustable shelving, concealed hinges and brushed nickel pencil pull hardware
- Stylish square edge granite countertops with 6" backsplash available in one color: Bliss
- Mainline® double-basin stainless steel kitchen sink with Delta® Westville single-handle pull-down faucet in polished chrome finish and food waste disposal button
- Convenient roll-out trash and recycling cabinet with two bins

ENERGY EFFICIENCY

- Solar panel system to help reduce your energy consumption (and bill) while reducing your carbon footprint
- Energy efficient LED surface-mounted disk lighting in select living areas
- Low-E dual glazed vinyl windows and sliding glass doors provide solar control and visible light transmittance, resulting in utility cost savings with increased efficiency
- Central air conditioning and heating with programmable Honeywell® Lyric™ T6 smart thermostats create more balance and energy conscious consumption
- High-performance WaterSense® faucets, low flow elongated toilets and showerheads conserve water
- Energy efficient water heater with direct vent
- Trouble-free Uponor® Pex plumbing piping system
- Pre-plumb for future electric vehicle charging station in garage

TECHNOLOGY

Your new home is fully connected and filled with myCommand smart home automation features:

- Schlage® Encode Plus™ Smart Wi-Fi deadbolt front door lock with illuminated touch screen allows for keyless entry
- Honeywell® Lyric™ T6 Thermostat allows you to control your home from anywhere. Program your system based on your needs or it can learn to adapt to your schedule, ensuring maximum comfort when you're home while saving money on your energy bills when you're away
- LiftMaster® WiFi-enabled garage door opener
- Wireless Access Points to optimize your wireless coverage throughout your home
- Fiber-optic cable connections for internet access that's three times faster than most high-speed services
- Technology pre-wiring with enhanced Category 6e data allows for high-speed data connection in kitchen, great room, and primary bedroom
- Convenient USB plug in primary bedroom and kitchen for an easy way to charge your devices





15+ ACRES OF AMENITIES

6 pools & parks sports courts outdoor fitness
fire pits & barbecues social community events
gated dog park fireplace picnic areas & more!



sundance
park

Pool • Spa • Fireplace • Cabanas
Lounge Areas • Tot Lot • Picnic Benches



newhavenlife.com

Front and rear elevations differ by building type and create variations in livable square feet. Stated dimensions are approximate estimates and not intended for space planning purposes. Brookfield Residential reserves the right, in its sole discretion, to change sales price and add, delete or modify floor plans, elevations, maps, specifications, features, options, materials, design, colors and incentives without notice or obligation. Square footages may vary. Window sizes and locations, as well as front entry porch wall configurations vary based on exterior elevations. Optional features are subject to construction cut-off dates. All maps, plans, landscaping and elevation renderings are an artist's conception and are not to scale. See sales counselor for details. Equal opportunity housing. ©2024 Brookfield Residential. DRE License #01896289. 6/2024



Brookfield
Residential